

# New condo on beginner Hill at MSM



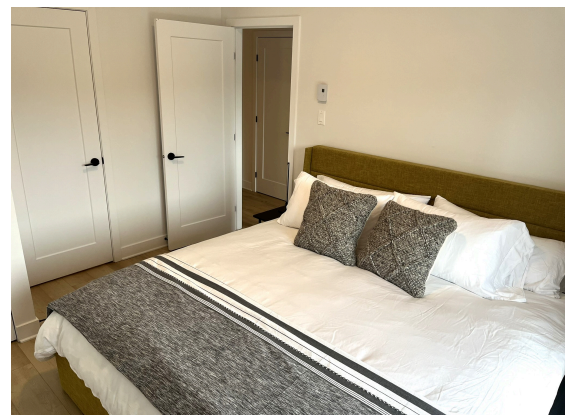
**BUILT IN 2023 - 3 BEDROOM 1,300SQ.FT CONDO - SKI IN SKI OUT SUITABLE FOR 10. AVAILABLE YEAR ROUND.**

WELCOME TO YOUR PERFECT MOUNTAIN GETAWAY AT MONT STE MARIE SKI HILL! THIS BRAND NEW CONDO OFFERS THE IDEAL BLEND OF COMFORT, CONVENIENCE, AND MODERN AMENITIES, MAKING IT AN EXCELLENT CHOICE FOR YOUR NEXT VACATION.

**CITQ #319954**

## **ACCOMMODATION**

- **3 Bedrooms plus Queen pullout**
  - **Bedroom 1 : 1 Queen size bed**
  - **Bedroom 2 : 2 sets of single bunk beds (4 singles)**
  - **Bedroom 3 : 1 King bed**
  - **Pull out sofa in living room - Queen**
- **1 full bathroom with shower on sleeping level**
- **85in TV in living room**
- **Large sectional**
- **Sheets, towels, blankets and pillows supplied**



# New condo on beginner Hill at MSM

## ADDITIONAL FEATURES

- Open concept with kitchen, living and dining area
- Microwave, fridge, stove and dishwasher
- Nespresso machine
- Expandable dining table, dishes and cutlery for 16
- Washer and dryer
- High speed internet



## ADDITIONAL INFORMATION:

- Private entrance right onto ski hill - front and back door
- No smoking and no pets in condo please
- Parking for 1 car - additional parking on ch. de la Promenade
- Summer - 5 min walk to lake and beach, mountain bike trails, tennis courts, pickleball courts, golf course
- Storage for skis and mountain bikes



(Condo\_28-4A)

For additional information & reservations, contact Linda Faith  
Email: [info@thebeggarsbench.com](mailto:info@thebeggarsbench.com)  
Telephone : 819.467.2735  
[www.thebeggarsbench.com](http://www.thebeggarsbench.com)